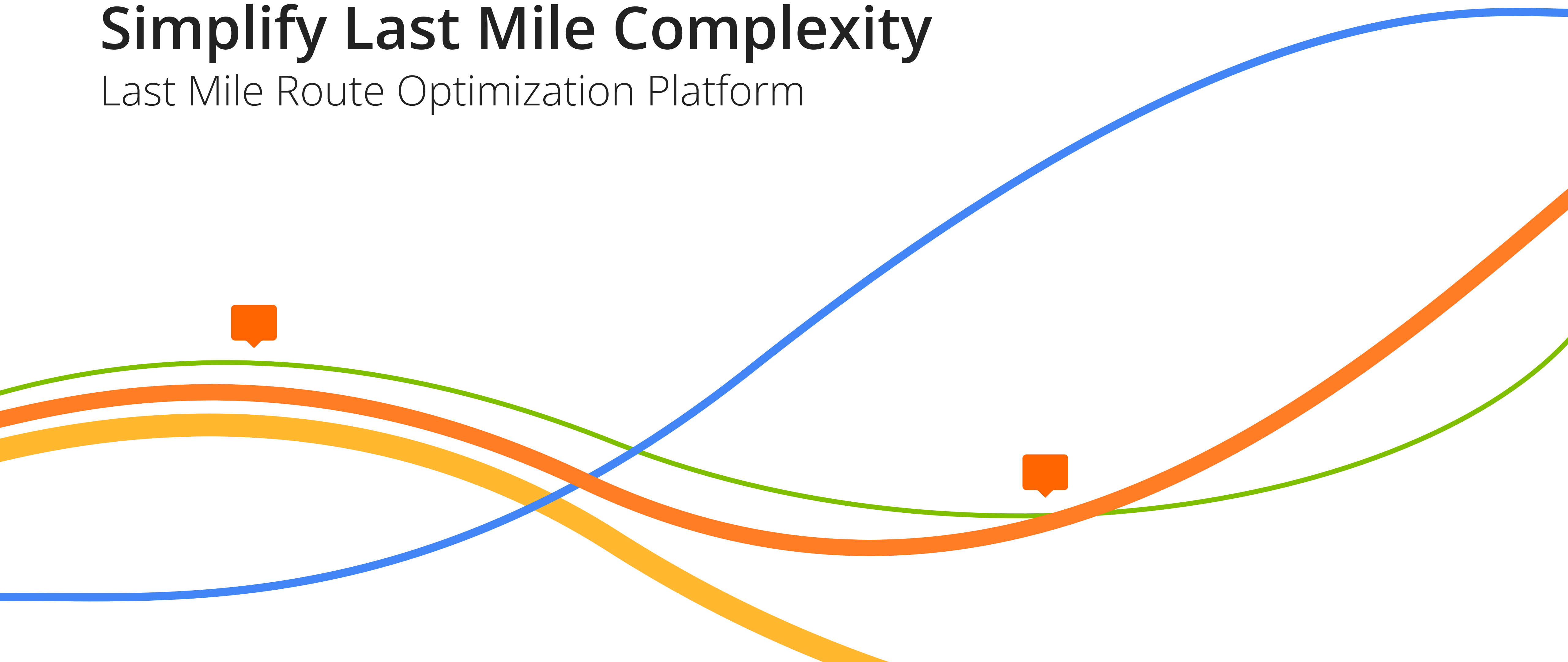




# Simplify Last Mile Complexity

Last Mile Route Optimization Platform



# Deliver Service Customers Trust

Modern customers have high expectations. They expect everything to be delivered to their doorsteps exactly when they need it. And they expect perfection. Failure in the last mile undermines every aspect of your business. All the work you've done to create a great product or service won't matter if you arrive late, make mistakes, waste time, and lose money when you deliver it.

Unfortunately, every new customer you add increases complexity, making it more difficult to deliver on customer expectations — more orders, more stops, more drivers, more vehicles, more exceptions, and more mistakes. Complexity also drives costs and threatens business profitability.

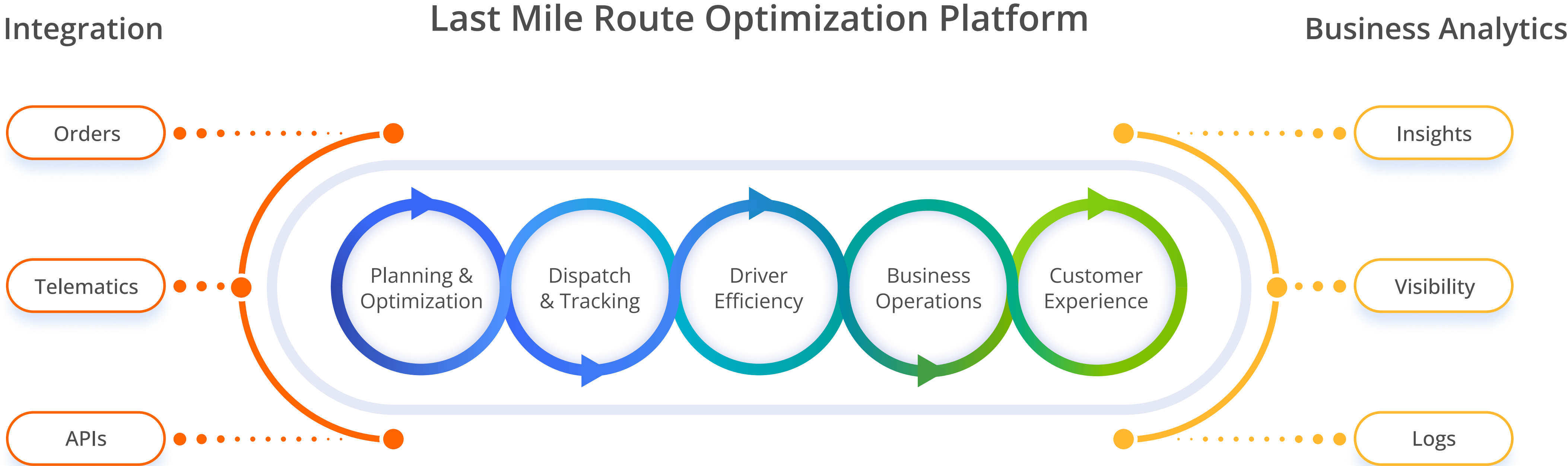
**The Route4Me Route Optimization Platform helps you master complexity at scale**, so you can focus on growing your business and satisfying your customers.

The Route4Me platform combines our patented, proven routing engine with powerful workflow automation to ensure accurate, efficient last mile execution. We help you deliver service your customers can trust.



# Route4Me Platform Overview

Grow your business, increase efficiency, and deliver better customer service with the world's most reliable last mile route optimization platform, battle-tested by thousands of businesses and billions of miles.



*The Route4Me platform automates and integrates mission-critical last mile workflows, empowering route planners, dispatchers, drivers, and managers to take your business to the next level.*

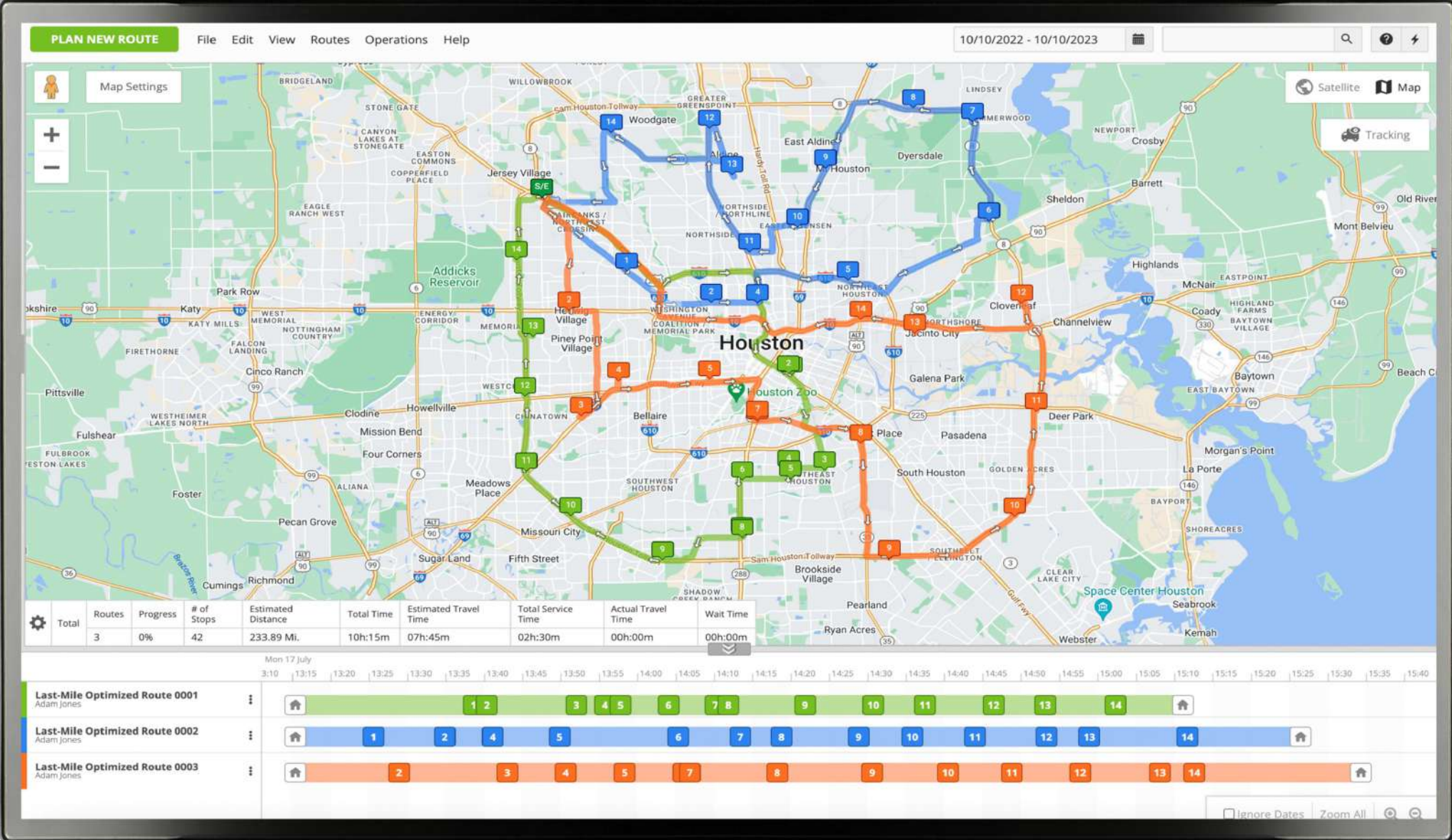
# Create Reliable Routes In Seconds

## Route Planning

Reduce route planning time and increase productivity across your entire operation. Select your stops, set constraints, and visualize optimized routes on detailed, interactive maps. Optimize routes based on the unique aspects of your business, including driver skills, labor laws, mixed fleets, commercial routes, vehicle capacity, service time and more.

## Adjust Plans Instantly

One constant you can depend on is change. Extra stop? New address? Unexpected delay? No problem. Just add your changes and Route4Me's dynamic route optimization engine will reoptimize your routes instantly.



“The amount of locations you can ask this app to optimize is AMAZING!!! Also, how many different ways you can tweak your routes to make the most sense to you... just fantastic!”



Molly F. — Validated Reviewer  
Mid-Market



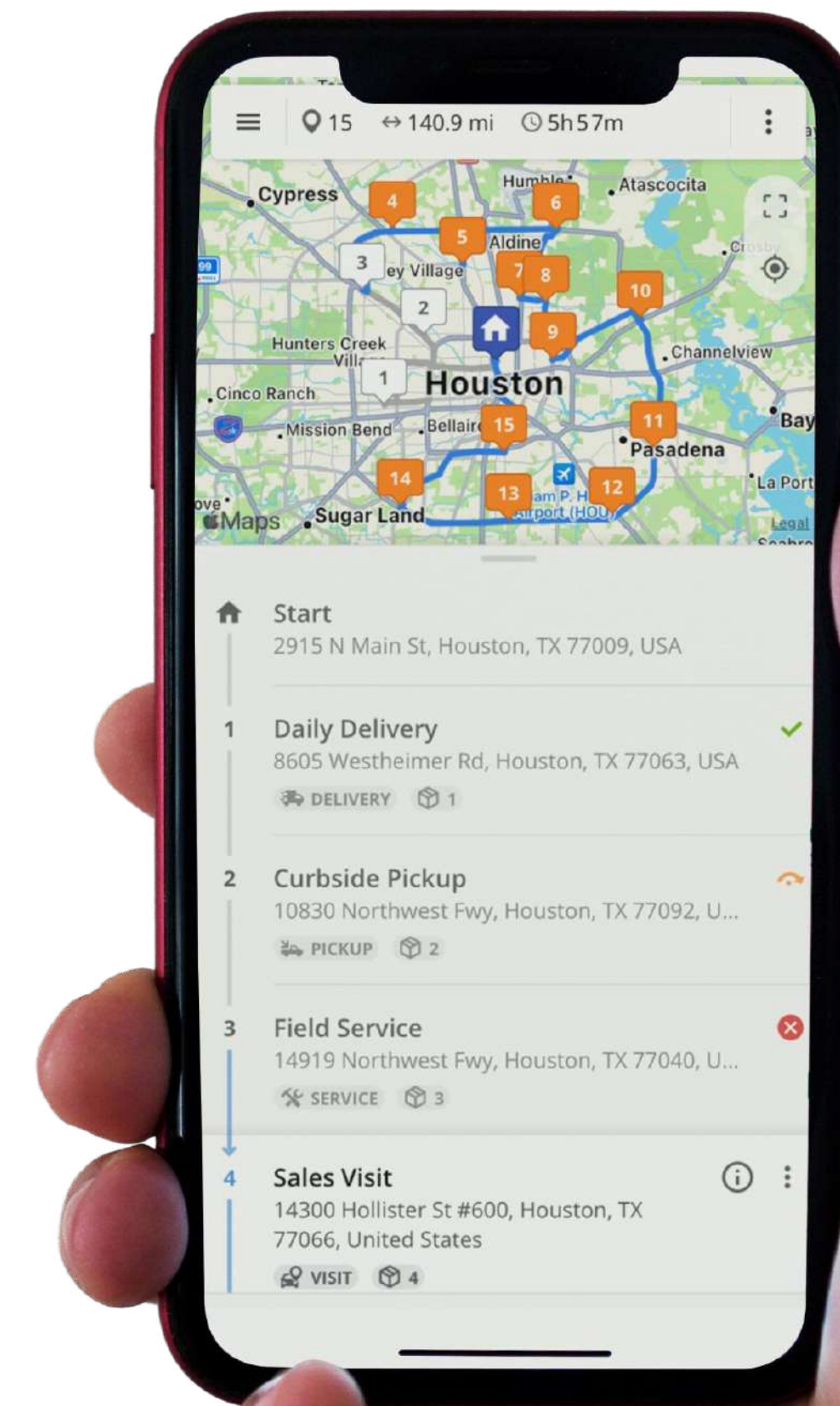
# Execute With Confidence Every Day

## Dispatch and Tracking

Keep your fleet running smoothly with total visibility and control. Dispatch route plans to drivers with a single click and monitor progress in real-time. Driving directions and stop instructions become available instantly on mobile driver apps. If optimized routes require a little human intervention, you can simulate routes, merge routes, reverse routes, insert driver breaks and make any required last minute changes prior to dispatch.

## Stay in Complete Control

Enjoy total, real-time visibility with the Route4Me Operations Matrix. Color-coded early, late, and on-time arrivals and departures provide a visual summary of planned vs. actual for every route in an easy-to-digest table. Handle exceptions with ease. Add stops, remove stops, change stop sequences, split routes, and more. Then dynamically replan routes and dispatch updated directions to drivers in minutes.



# Arrive On Time, Every Time

## Driver Efficiency

Ensure consistent performance across your team by giving drivers the tools they need to be successful. Choose the navigation module that fits your business, enable easy communication on the road, manage workflows for delivery and service stops, and offer in-app tutorials to reduce training costs.

## Stay On Top of The Details

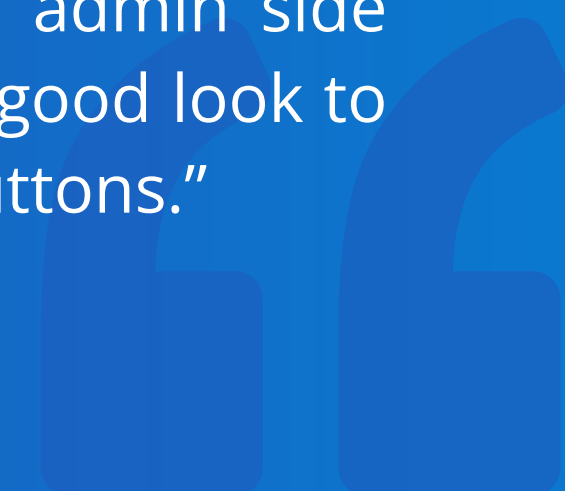
Make sure drivers get where they are going with turn-by-turn navigation and accurate geocoding. Monitor the status of every stop, record stop details with custom data, and capture proof of delivery with notes, e-signatures, barcodes, voice recordings, images, and videos. Improve service and avoid mistakes by enabling easy communication between drivers, dispatchers, and customers.



"Route4Me makes it a lot easier to plan and edit a route, and the user view both on the admin side and app side for our technicians has a good look to it with easy-to-understand functions/buttons."



Cameron B. — Validated Reviewer  
Enterprise



# Simplify Complex Business Processes

## Orders & Workflows

Get more out of your people and fleet by integrating route planning with orders and workflows for a complete last mile optimization solution. Increase orders per route, load vehicles to capacity, and maximize technician productivity by incorporating your unique delivery and service requirements into your plans.

## Streamline Delivery Management

Efficiently manage every step of order fulfillment from possession scan to proof of delivery. Upload, enter, or dynamically sync orders to Route4Me. Map orders to territories and load vehicles to capacity by planning routes based on pieces, size, weight, or revenue. Then use the Route4Me mobile app to sort, load, dispatch and deliver in a simple, seamless workflow.

## Improve Service Performance

Ensure timely, high quality service by integrating route planning with service workflows. Incorporate technician skills, service times, vehicle pickups and dropoffs, and other service needs into your plans. Eliminate support issues and ensure timely payment by keeping a complete audit trail of important service artifacts, including notes, e-signatures, voice recordings, images, and videos.



# Earn Customer Loyalty

## Customer Experience

Consistently meet or exceed customer expectations with proactive communications. Send email and text notifications to keep customers informed from the time a stop is scheduled until it is completed. Manage expectations with order status, changes, and instructions. Then ask for performance feedback with driver ratings.

## Build Your Brand

Route4Me helps you look your best for your customers. Provide a branded tracking page that can be linked to or embedded in your company website. Tailor your email and text notifications to fit your brand with custom templates and data.

“Route4Me allows our business to route efficiently & track our driver fleet daily while providing detailed communication to our customers.”



Kenneth R. — Validated Reviewer  
Mid-Market





# Measure, Manage, Master

## Business Analytics

Make smarter decisions with a deeper understanding of last mile operations, including key performance indicators and actual vs planned results. Where are my drivers? Where are my trucks? Is that stop complete? Was that order delivered? Route4Me gives you real-time visibility to your entire operation from a top down summary of every route in progress on the Route Operations Matrix to every granular detail on the Dynamic Route Manifest.

## Continuously Improve Your Operations

Understand your strengths and identify areas for improvement using the Route4Me Dashboard. Measure actual vs. plan for meaningful KPIs, including route time, distance, and number of stops. Route4Me automatically records detailed audit logs of route history and activities, including drivers, vehicles, routes, GPS locations, statuses, notes, e-signatures, barcodes, voice recordings, images, and videos.



# Simple, Seamless IT Infrastructure

## Telematics Gateway

If you have telematics for your vehicles, then you know the location of your assets every minute of the day. But did they arrive on time? Was the job completed? Is the customer happy? Take last mile visibility and analytics to a new level by measuring actual against plan with integration between Route4Me and your telematics using the Route4Me Telematics Gateway.

## Business Applications

Connect Route4Me to your order management system for a seamless last mile delivery workflow. Easily import and export orders from any OMS or take advantage of our out-of-the-box integrations with Shopify, WooCommerce, and Magento. Plan routes directly from orders or insert orders into pre-planned routes using dynamic order insertion.

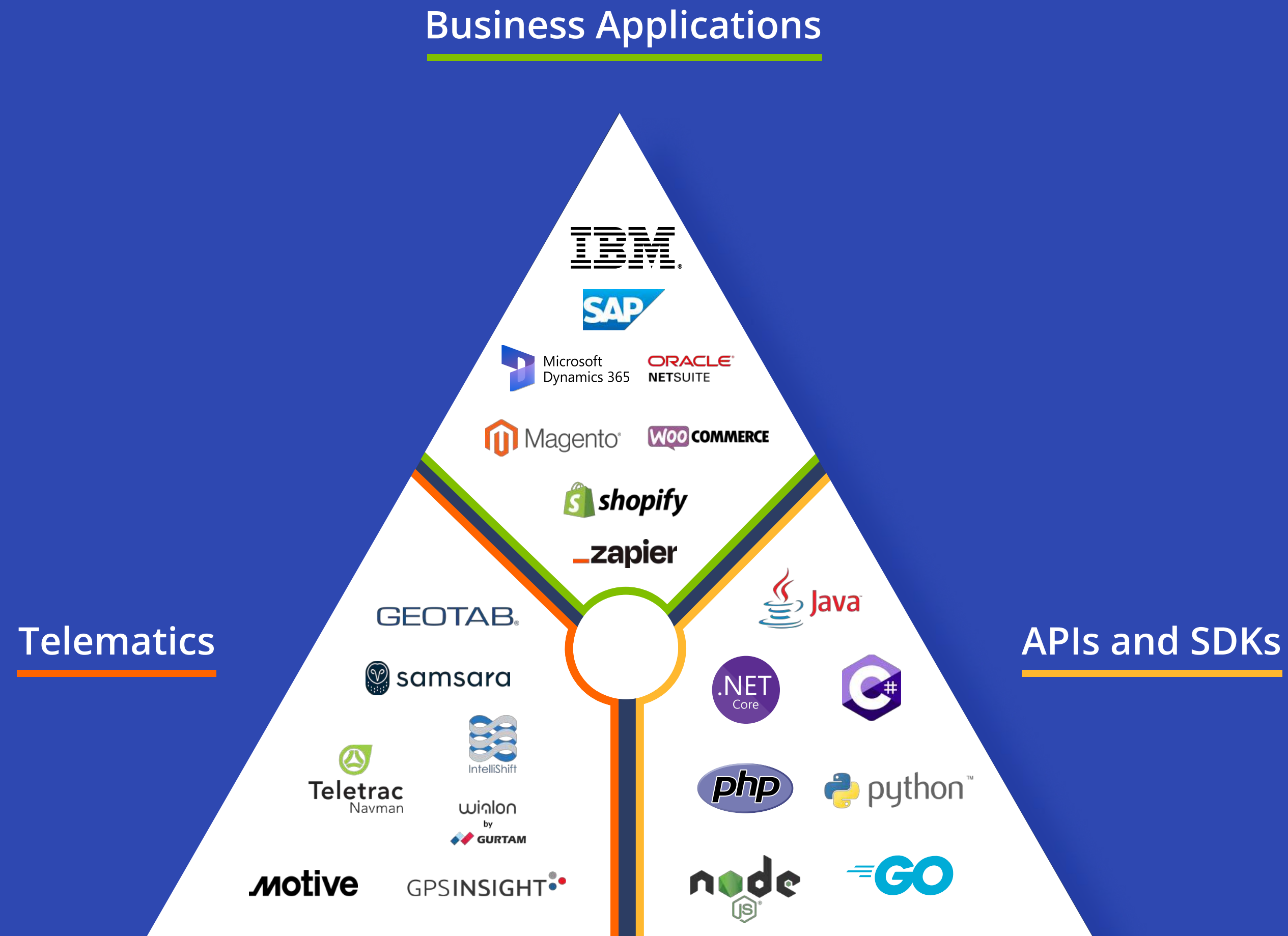
## Route4Me APIs and SDKs

Integrate to core infrastructure, such as SAP, Netsuite or other ERP systems. Route4Me is designed to integrate cleanly into your technology stack with industry-standard, low latency, high availability, publicly documented, RESTful APIs and SDKs. In fact, the Route4Me Developer Portal makes the same tools we use to build Route4Me SaaS and mobile apps directly available to you.



# Route4Me Platform Integration Framework

Create bullet-proof, mission-critical business processes with Route4Me integrations that enable end-to-end last mile automation.



# Feature List

## Route Planning

- Routes Map and Editor
- Address Book and Map
- Territory Management
- Route Simulation
- Driver Breaks
- Curbside Delivery
- Import Routes and Destinations
- Ultra High Resolution Mapping

## Route Optimization

- Single Driver Optimization
- Optimize Across Drivers
- Optimize Across Facilities
- Mixed Vehicles Routing
- Driver Skills
- SmartZone Routing
- Destinations Bundling
- Time Windows
- Customer Priorities
- Business Rules and Constraints

## Business Operations

- Order Management
- Order Label Scanning
- Load and Unload Orders
- Order Detail Export
- Proof of Delivery and Service
- Service and Delivery Workflows
- Custom Data
- HIPAA Compliance

## Business Analytics

- Route Reporting Dashboard
- Planned vs Actual
- Route Operations Matrix
- CO2 Emissions Statistics
- Audit Logging and Activity Stream
- Route Export
- Seasonal Data Retention
- Advanced Data Retention

## Dispatch & Tracking

- Assign Drivers and Vehicles
- Dispatch and Share Routes
- Update and Reoptimize Routes
- Route Manifests
- Real-Time Alerts
- Real-Time GPS Tracking
- Advanced Team Management
- Export Routes and Maps

## Driver Efficiency

- Turn by Turn Directions
- Real-time Navigation and Maps
- Voice Guided Navigation
- Route4Me Voice Guided Navigation
- E-Signatures, Videos, Images, Notes

## Customer Experience

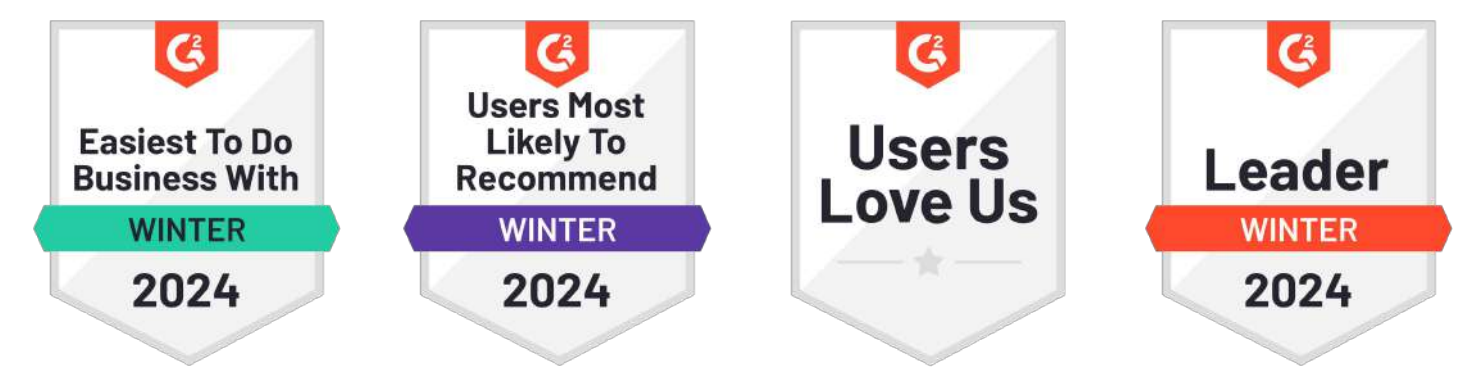
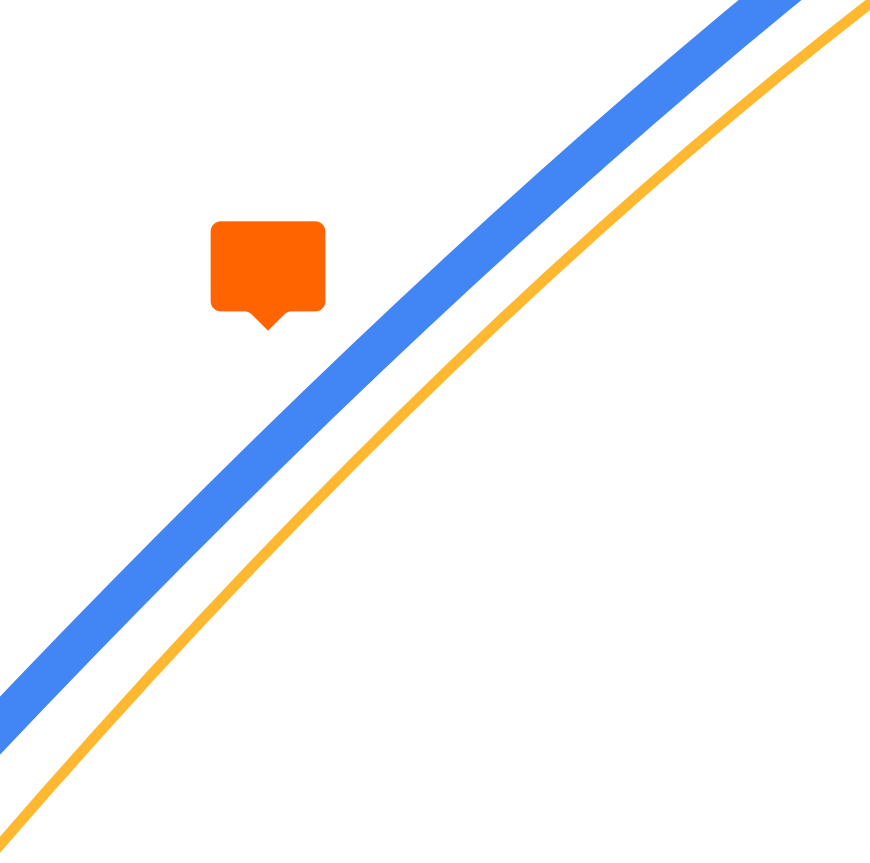
- Email Notifications
- Text Message Notifications
- Notifications History
- Online Order Tracking
- Customer Satisfaction

## Integrations

- Route4Me APIs & SDK
- Telematics Platforms
- Ecommerce Platforms
- ERP and CRM Platforms
- SFTP Data Sync

## Mobile Apps





## Contact Us:

📞 1-888-552-9045

📍 1010 N. Florida Avenue Tampa, FL 33602

✉ support@route4me.com

🌐 route4me.com/contact

“I love Route4Me and its excellent optimization capabilities, but what has truly helped me is the SUPPORT they offer.”

★★★★★

Molly F. — Validated Reviewer  
Mid-Market